

Spoke type Load Cell

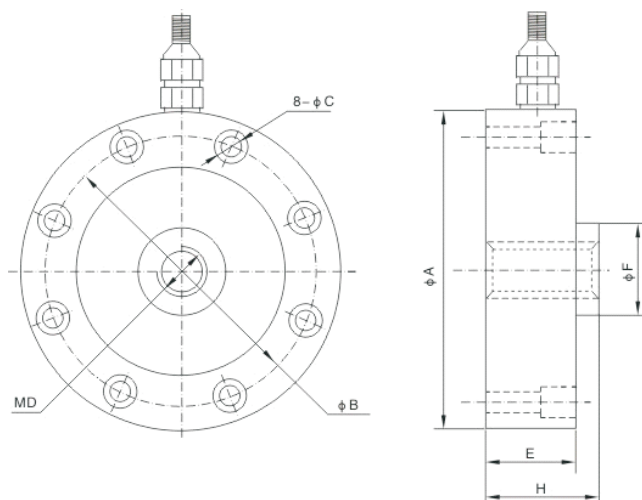
- Made of alloy steel or stainless steel
- Suitable for belt weigher, hopper scale and other weighing devices
- Good steel performance and high accuracy



SPECIFICATIONS

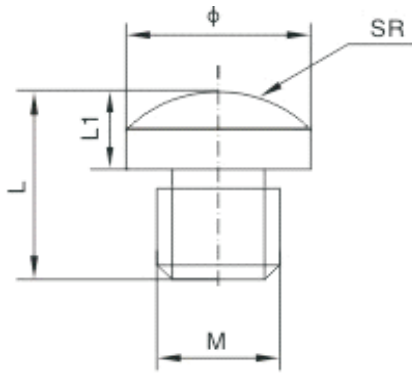
Rated Capacity	0.5, 1, 2, 3, 5, 10, 20, 30, 50, 60, 100(t)		
Precision	0.05%F.S	Operating Temp.Range	-20~+65℃
Rated output	2.0mV/V	Input resistance	750±15Ω/380±10Ω
Creep	±0.05% F-S/30min	Output resistance	700±5Ω/350±3Ω
Zero output	±1% F-S	Input resistance (Ω)	≥5000MΩ(50VDC)
Temperature effect on zero	±0.05% F-S/10℃	Temperature effect on output	±0.05% F-S/10℃

DIMENSION



RANGE	SIZE(mm)						
	φA	φB	φC	φF	MD	H	E
0.5-7t	105	88.9	6.5	32	M16*1.5	37	34
10-25t	125	101.6	8.5	39	M32*1.5	52	48
30-50t	145	116.8	10.5	50	M40*1.5	58	54
60-100t	205	162	12.5	80	M60*2	85	78

ACCESSORIES 1



RANGE	SIZE(mm)				
	ϕ	L1	L	M	SR
0.5-7t	31	13	28	M16*1.5	80
10-25t	38	24	51	M32*1.5	120
30-50t	50	32	62	M40*1.5	200
60-100t	80	42	80	M60*2	280

WIRING

