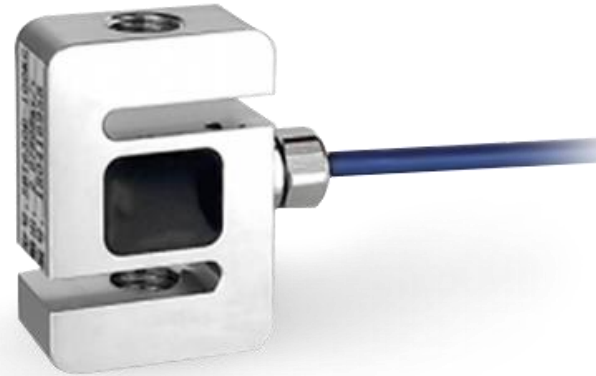


Miniature S type Load Cell

SPECIAL FEATURES

- Stainless steel
- Small size, both tension and compression measurement, with overload protection
- Suitable for push pulling force gauge using, hopper scale, industrial measuring system, etc



SPECIFICATION

Range	3, 5, 10, 20, 30, 50, 100kg	Comprehensive error	≤±0.1%
Non-linearity	0.1%	Rated output	1.0~1.5mV/V
Zero balance	±2%F.S	Creep	±0.1%F.S/30min
Output resistance	350±5Ω	Input resistance	350±5Ω
Defend grade	IP66	Insulation resistance	≥2000MΩ/50VDC
Compensated temp.range	-10~+60°C	Excitation voltage	5~15V
Safe overload	150%F.S	Temp. effect on span	±0.05%F.S/10°C
Operating temp Range	-20~+80°C	Temp. effect on zero	±0.05%F.S/10°C

DIMENSION

