

Donut Through Hole Load Cell

SPECIAL FEATURES

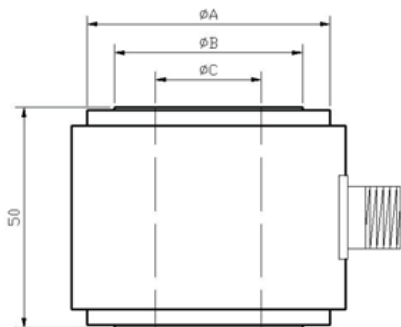
- High precision, high stability, good output symmetry
- It is used to measure the force acting on a fastener or shaft, such as a bolt or in a hydraulic press.



SPECIFICATION

Rated capacity	120, 180, 220, 260, 330, 400KN	Input resistance	735±35Ω
Comprehensive error	0.1%F.S	Output resistance	700±3Ω
Sensitivity	1.5±0.1mV/V	Insulation resistance	≥2000MΩ
Hysteresis	±0.05%F.S	Excitation voltage	5~12VDC
Non-linearity	±0.05%F.S	Operation temp. range	-20~+70°C
Creep	±0.1%F.S/30min	Ultimate overload	120%F.S
Repeatability	±0.05%F.S	Ultimate overload (%F.S)	150
Temp. effect on zero	±0.03%F.S/10°C	Temp. effect on span	±0.03%F.S/10°C

DIMENSION



RANGE(kN)	A	B	C
120	47.4	31	17
180	58.4	38	22
220	62.4	42	24
260	66.4	44	26
330	72.4	51	29
400	74.4	53	32